



This project has received funding from the European Union's Seventh Framework Programme for research, technological development and demonstration under grant agreement number 321278.

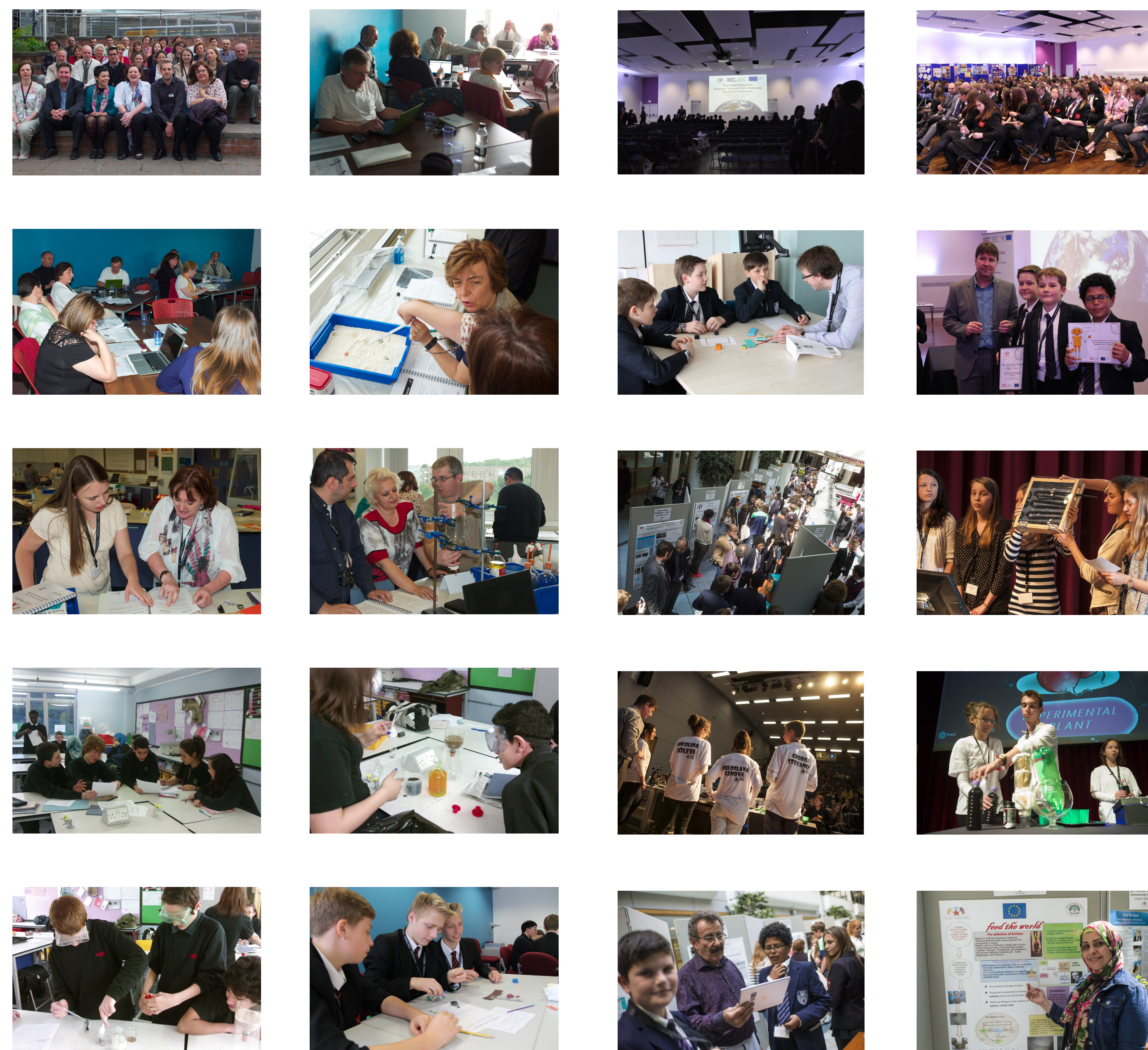
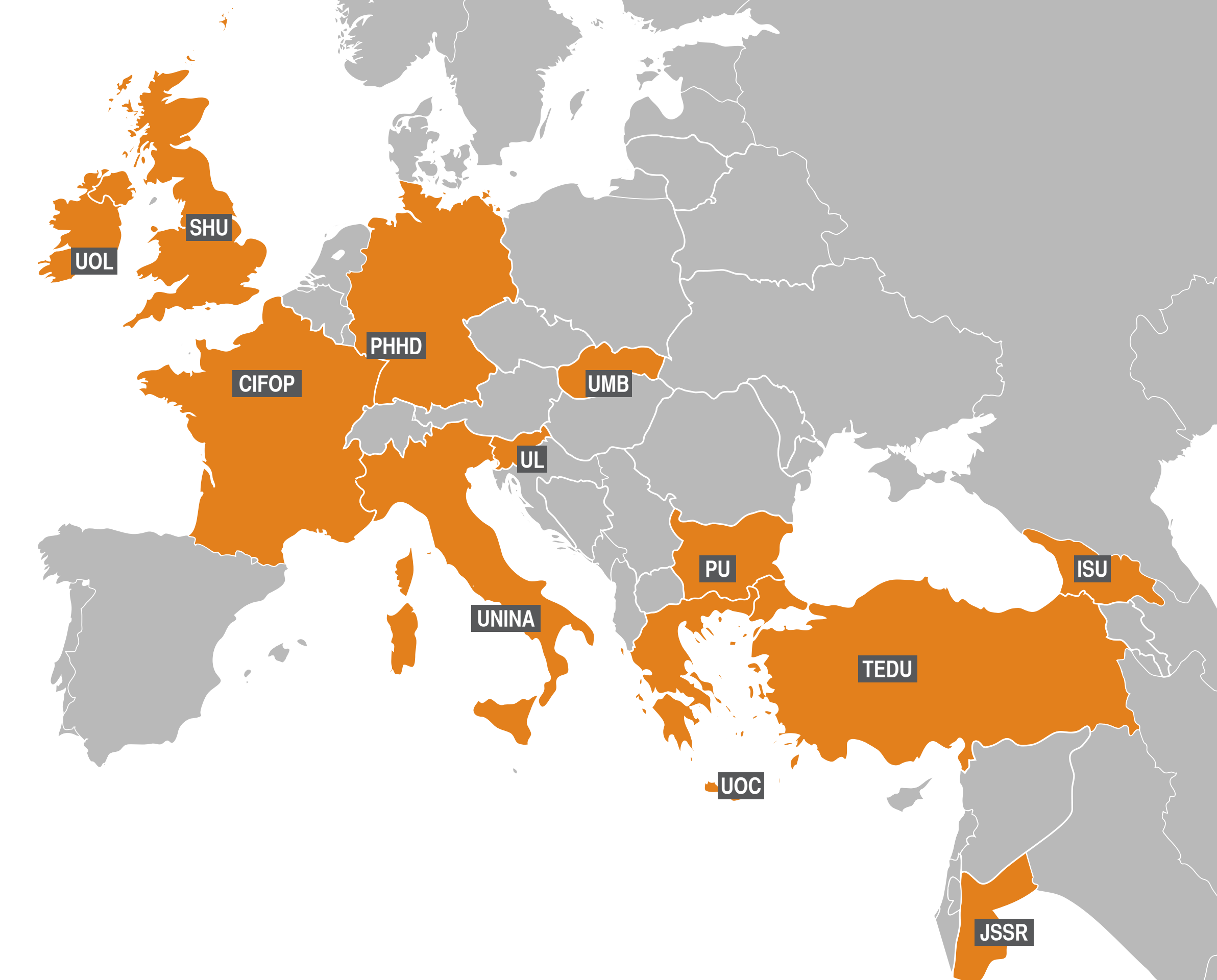
**Sheffield Hallam University** | **Sheffield Institute of Education**

# Chain Reaction

**Chain Reaction** is an international project advancing Inquiry Based Science Education (IBSE) for 14-16 year olds through twelve partner countries over a three-year period.



**SHU** Sheffield Hallam University, UK (Co-ordinator)  
**UNINA** Università Degli Studi Di Napoli Federico II, Italy  
**UMB** Univerzita Mateja Bela V Banskej Bystrici, Slovakia  
**TEDU** Ted Üniversitesi, Turkey  
**PU** University Of Plovdiv, Bulgaria  
**CIFOP** Centre International De Formation Pedagogique, France  
**UL** Univerza V Ljubljani, Slovenia  
**PHHD** Pedagogische Hochschule Heidelberg, Germany  
**UOC** Panepistimio Kritis, Crete, Greece  
**UOL** University Of Limerick, Ireland  
**JSSR** Jordan Society For Scientific Research, Jordan



**Chain Reaction** provides engaging IBSE professional development to teacher educators from each participating nation, supported by a sustainable framework along with resources tailored to individual cultural and curricular needs. Teachers will build their knowledge and skills, learning independently and as part of the wider network.

Once fully confident with the IBSE model and provided EUPRB resources, the participating teachers deliver a series of exciting and student-focussed lessons. Using critical thinking, reasoning and problem solving skills, students work together to research the scientific scenarios provided, which they summarise in presentations detailing the inquiry processes they engaged in, sharing their findings whilst being creative and imaginative.

These are then presented at national student celebration events which also involve practising scientists, recruited from local industry and research institutions, who act as role models and share their work to inform and encourage students to consider a career in science related fields. Working in assessment teams with teachers, the scientists select students who will then present at the project's prestigious annual international conferences.

Chain Reaction is rooted in problem solving and inquiry based learning principles, aiming to actively involve students in their science studies, and enable them to experience the excitement and challenges of experimental and investigative science, as well as develop as science active citizens.

**12**  
Partners

Reaching
180 Schools
360 Teachers (directly) 1,440 Teachers (indirectly)
10,800 Students

**36** National  
Conferences

International  
**3**  
Conferences

For further information & resources visit:  
**[www.chreact.eu](http://www.chreact.eu)**

