



Come along and find out about the fantastic science and engineering in our region - learn about breaking speed records, the disease behind the ice bucket challenge, how our personal data is really being used and much more!

The [events](#) take place in university labs and lecture theatres, museums, libraries, parks, cemeteries and even a brewery! Nearly all [events](#) are free and for some you will need to [register](#) and book online - it's quick and easy to do!

The Festival is organised by [Sheffield Hallam University](#) and the [University of Sheffield](#) in collaboration with local schools, museums, industry and commerce, and it celebrates [British Science Week 2015](#).

# March 2015

Free activities,  
talks, exhibitions  
and workshops -  
open to everyone!

## #SFOSE

Twitter feed here?

OR

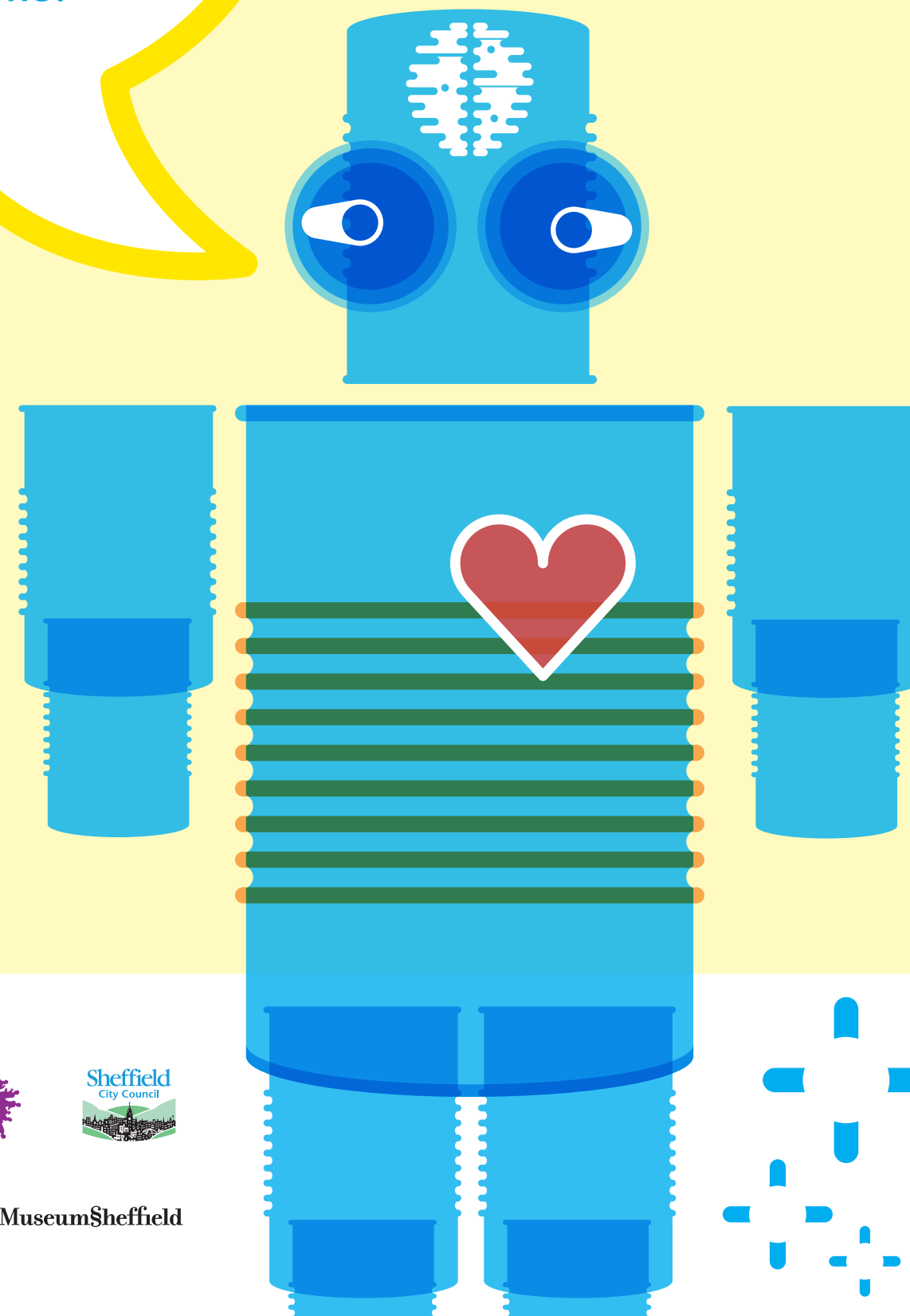
Random event highlight?

My Festival

Register >

Login >

Events | About | Contact



Search events...

Click on a date below to see what events are happening that day or use the Search box above to try find something in particular...

[View all events](#) >

[Tuesday, 3rd March 2015](#) >

[Wednesday, 4th March 2015](#) >

[Sunday, 8th March 2015](#) >

[Saturday, 14th March 2015](#) >

[Tuesday, 19th March 2015](#) >

[Wednesday, 3rd March 2015](#) >

[Tuesday, 3rd March 2015](#) >

[Wednesday, 4th March 2015](#) >

[Sunday, 8th March 2015](#) >

[Saturday, 16th March 2015](#) >

[Tuesday, 19th March 2015](#) >

[Wednesday, 3rd March 2015](#) >

## Saturday, 14th March 2015

[Click an event to view details & book](#)

8:00am	E	Revelation: Exhibition of Art Exploring Bio-engineering
10:00am	W	It's a Rubbish Adventure
10:00am	T	Alfred Denny Museum Guided Tours
10:00am	E	The Beauty of Science: Art In Glass - Exhibition
10:30am	W	Where on Earth did that come from?
10:30am	W	Mindfulness for families
11:00am	T	Alfred Denny Museum Guided Tours
12:00pm	D	The Beauty of Science: Art In Glass - Hot glass demonstrations
1:00pm	W	Explore Science & Engineering @ Sheffield Hallam University
1:00pm	W	Alfred Denny Museum Young Explorer Session
2:00pm	L	Talk about Revelation: Art Exhibition Exploring Bio-engineering
2:30pm	D	The Beauty of Science: Art In Glass - Hot glass demonstrations

### Key to event type

- E Exhibition
- L Lecture
- W Workshop
- S Seminar
- D Demonstration
- P Performance
- T Tour
- Q Quiz

Click on a date below to see what events are happening that day or use the Search box above to try find something in particular...

[View all events](#) >[Tuesday, 3rd March 2015](#) >[Wednesday, 4th March 2015](#) >[Sunday, 8th March 2015](#) >[Saturday, 14th March 2015](#) >[Tuesday, 19th March 2015](#) >[Wednesday, 3rd March 2015](#) >[Tuesday, 3rd March 2015](#) >[Wednesday, 4th March 2015](#) >[Sunday, 8th March 2015](#) >[Saturday, 16th March 2015](#) >[Tuesday, 19th March 2015](#) >[Wednesday, 3rd March 2015](#) >

## Where on Earth did that come from?

### Workshop by Peter Kennett of Earth Science Education Unit

**Venue** Start at top of steps leading down into the Peace Gardens, Pinstone Street, Sheffield S1 2HH

**Date** Saturday, 14th March 2015

**Time** 10:30am - 12:00pm

**Audience** General audience

Join us for a geological walkabout to discover the natural stone used in the buildings of Sheffield city centre and unearth the fascinating stories they reveal. Did you know that Sheffield was once on the equator, and much of England was a hot desert? Did planners choose wisely for the stone under the Peace Garden fountains? How much has the Earl of Shrewsbury lost since last year? The route runs from the Peace Gardens to the Cathedral forecourt. Come with warm clothing.

**Website** [www.example.com](http://www.example.com)

**Twitter** [@ExampleFeed](#)

### Booking on this event

Booking is required.

There are 12 places left.

Registered users can book a maximum of 6 places each.

Select the number of places you would like and click the *Book button once*.

 [Book](#)