



# Making a difference: enhancing the student experience through small scale action research

Pollyanna Magne: Programme Director PG Cert LTHE



# A little bit of background

PG Cert in Learning and Teaching in Higher Education (LTHE)



2<sup>nd</sup> LTHE module is a small scale development project:

- Apply pedagogical knowledge
- To improve the learners' experience
- To enhance their own area of practice



# The Project Process



Find a focus: issue / idea / implementation /  
evaluate and recommend

Must be directly relevant to their working practice and will  
impact on learning or the learner experience

Discipline specific support and guidance

Proposal and ethics

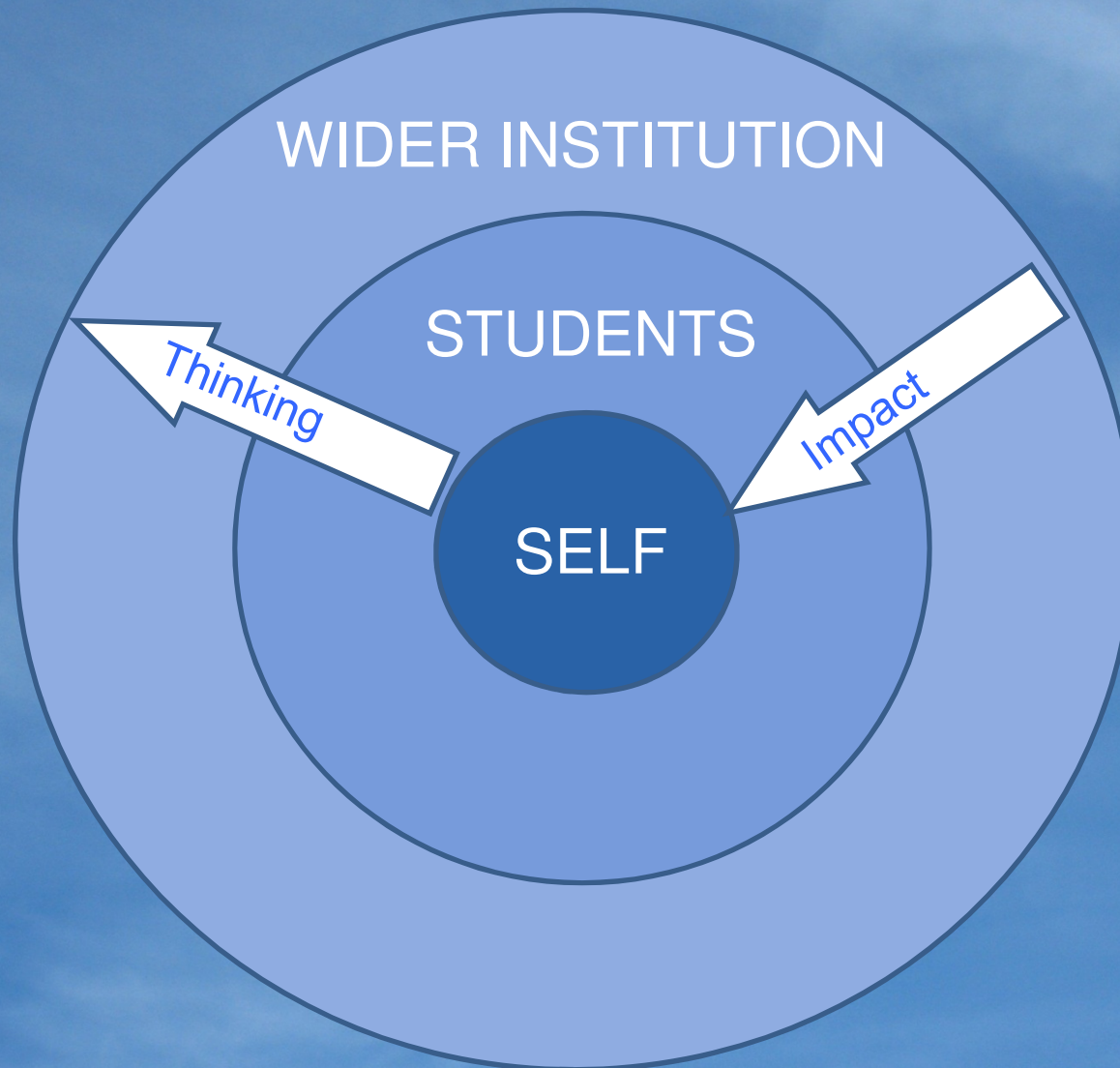
Midway progress presentation

Formative draft

Summative submission



# Challenging their focus



- ~~Classroom learning (& being on the line)~~
  - ~~Supporting the learning process~~
  - ~~Supporting the learning process~~
  - ~~Reflection on teaching~~
  - ~~Supporting the learning process~~
- SURVIVAL**

Based on Fuller (1969)



# Example 1 Krzysztof Nawratek



Architecture, studio setting, final year project

- Students present progress
- Tutors give formative verbal & concise written feedback
- Students write feedback down

LTHE tutor observed and asked:

- What have the students captured?
- How can they re-engage with that feedback?



Project

- Decided to audio record review feedback in studio
- Audio formative feedback made available on CD

Findings

- Didn't want feedback to be open to fellow students
- Found it useful to have recording



## Example 2 Hannah Smith

Aim: to uncover and address students' concerns around writing (Early years)

Method:

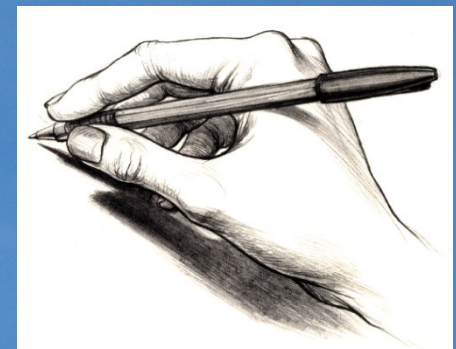
- Questionnaires & free writing activities
- Used this data to feed into teaching interventions
- Students evaluated the workshops

'Writing Workshops' & accompanying workbook

- Introduced students to writing techniques
- Opportunities to practice writing
- Clarify questions or concerns

Findings

- Anxious, confused and lacking in motivation
- Interventions helped demystify assessment
- Supported practice built confidence





## Example 3 Cen Tjhai



### Problems

- learners who struggle with numeracy
- provide timely and yet quality feedback

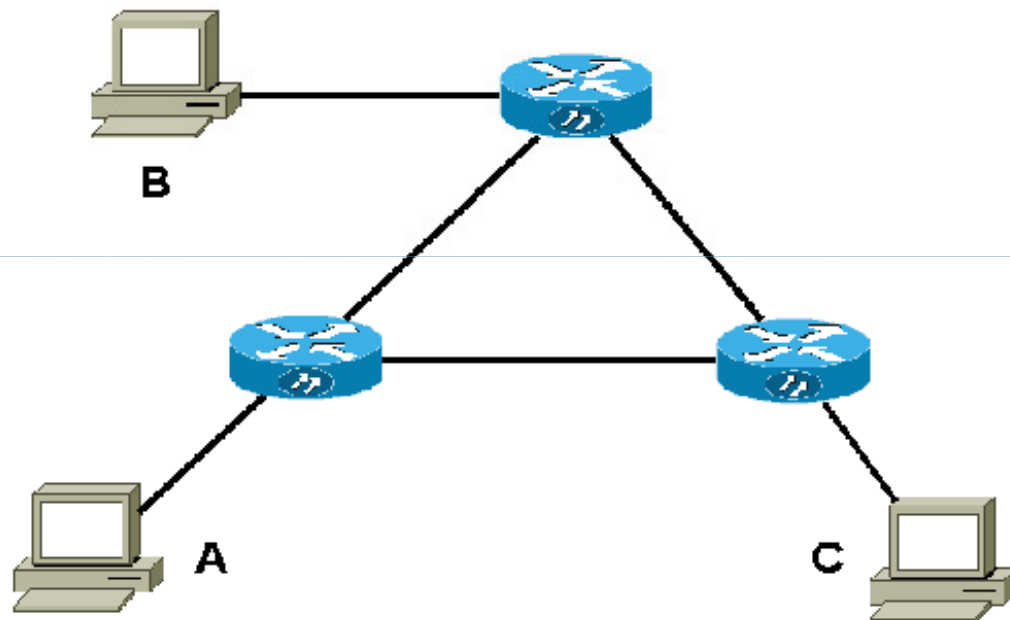
### Project

- A multimedia rich e-tutorial package
- Focus on numerical problems
- Questions and mainly multiple choice answers
- Instant marking and rich verbal & diagrammatic feedback



## CNET325 Reliability and Traffic

As shown in figure below, three PCs are connected via three routers. Determine the reliability of service from A to B if we assume that each router has reliability of 0.998 and each section of cable has reliability of 0.9995.



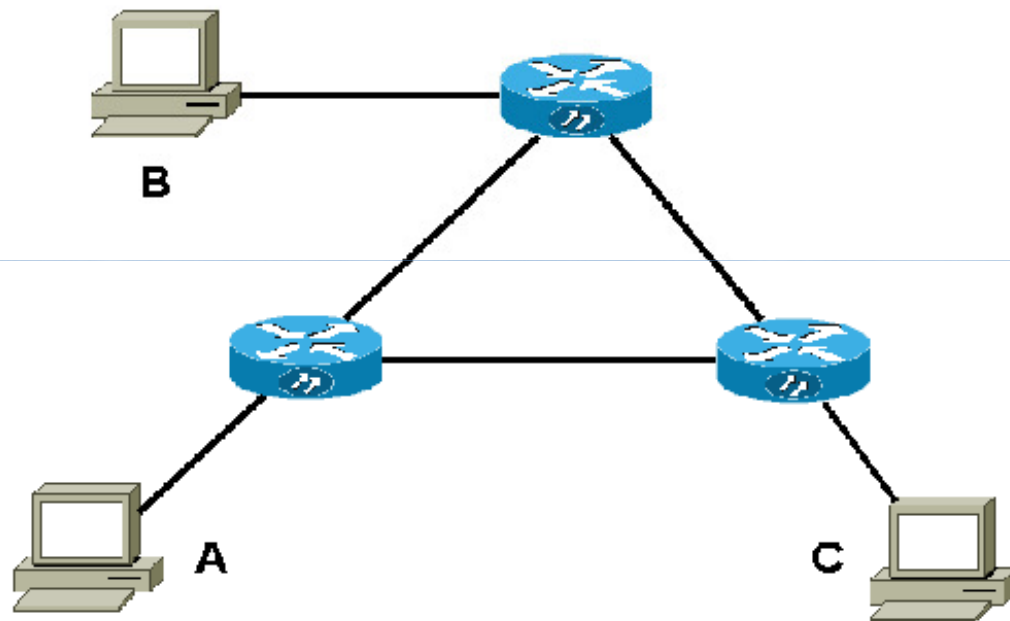
- 0.99899
- 0.99551
- 0.99501
- 0.99799
- 0.99600

[Next](#)[End](#)



## CNET325 Reliability and Traffic

As shown in figure below, three PCs are connected via three routers. Determine the reliability of service from A to B if we assume that each router has reliability of 0.998 and each section of cable has reliability of 0.9995.



- 0.99899
- 0.99551
- 0.99501
- 0.99799
- 0.99600

[Next](#)[End](#)

SOLUTION



## Example 3 Cen Tjhai



### Problems

- learners who struggle with numeracy
- provide timely and yet quality feedback

### Project

- A multimedia rich e-tutorial package
- Focus on numerical problems
- Questions and mainly multiple choice answers
- Instant marking and rich verbal & diagrammatic feedback

### Findings

- 97% strongly agreed and 3% agreed that package was useful and effective
- 87% strongly agreed and 10% agreed that explanations of solutions were useful
- Comments noted that similar packages would be useful in other modules



# Dissemination



Required at:

- Departmental
- School or
- Subject area level



Helps with familiarisation  
of departmental structures  
and processes

Some colleagues also:

- Make available to PedRes database
- Present at VC's conference
- Publish articles
- Present at national / international conferences





# 'open floor'

critical reflections

questions

ideas for future developments

If a new colleague wanted some ideas for a small scale development project from you:

- What would you like them to focus on?
- What impact do you hope it would have on the student learning experience?

Pollyanna Magne [pmagne@plymouth.ac.uk](mailto:pmagne@plymouth.ac.uk)